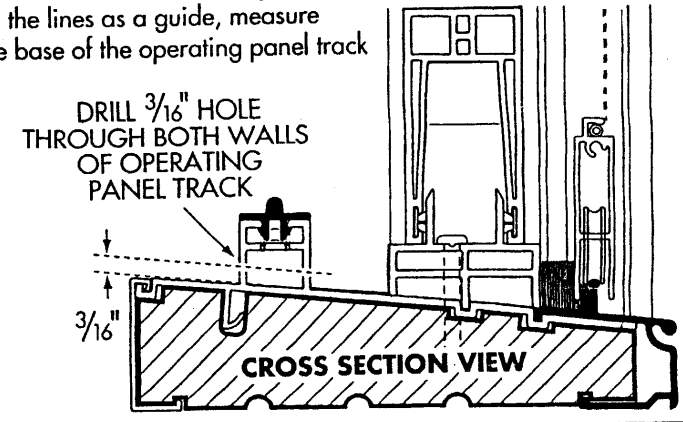
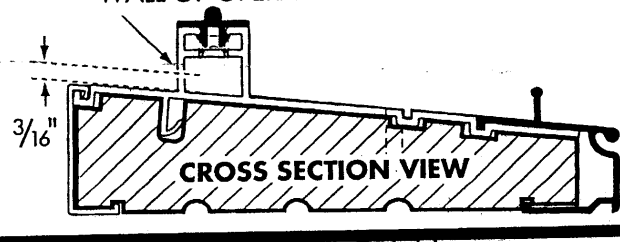


With the operating panel in the closed position, measure 4" in from the edge of the operating panel and 4" in from the edge of the frame and mark a line at both points. Using the lines as a guide, measure 3/16" up from the base of the operating panel track and mark a point. Drill a hole *through both vinyl walls* of the operating panel track at the points indicated using a 3/16" drill bit.



### 2a) DRILL FROM INSIDE

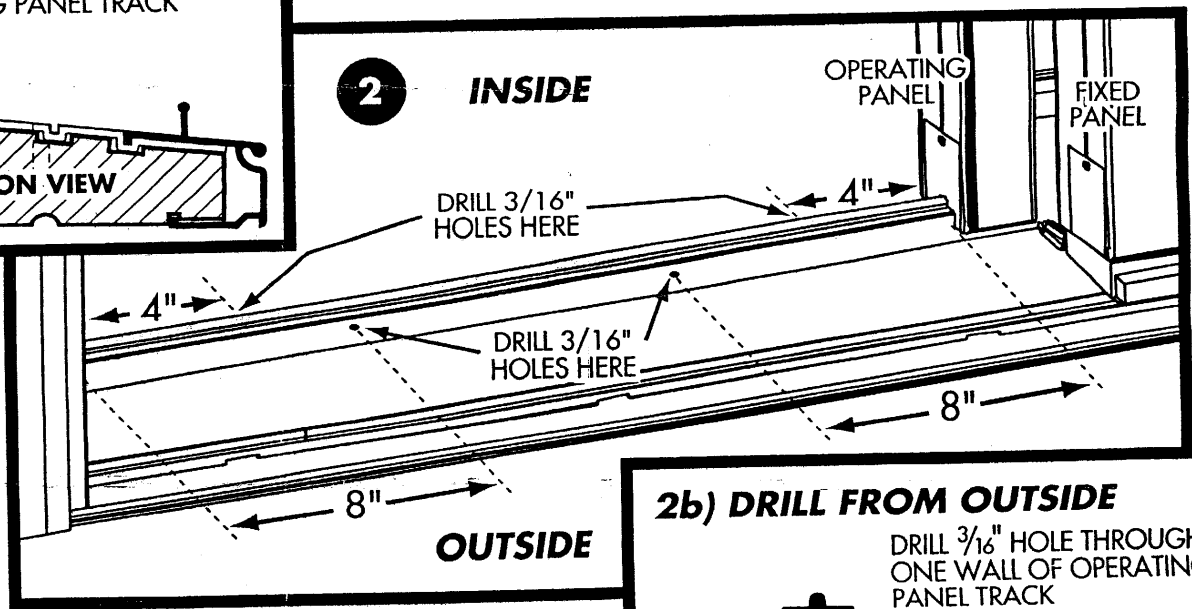
DRILL 3/16" HOLE THROUGH ONE WALL OF OPERATING PANEL TRACK



**2 & 2a)** Slide the operating panel and the screen door to the fully open position. From the **inside** of the door, measure 4" in from the edge of the operating panel and 4" in from the edge of the frame and mark a line at both points. Using the lines as a guide, measure 3/16" up from the base of the operating panel track and mark a point. Drill a hole **through one vinyl wall only** of the operating panel track at the points indicated using a 3/16" drill bit. **DO NOT DRILL STRAIGHT THROUGH THE OPERATING PANEL TRACK.**

**2 & 2b)** From the **outside** of the door, measure 8" in from the edge of the operating panel and 8" in from the edge of the frame and mark a line at both points. Using the lines as a guide, measure 1/8" up from the base of the operating panel track and mark a point. Drill a hole **through one vinyl wall only** of the operating panel track at the points indicated using a 3/16" drill bit. You may need to angle the drill slightly to drill these 2 holes. **DO NOT DRILL STRAIGHT THROUGH THE OPERATING PANEL TRACK.**

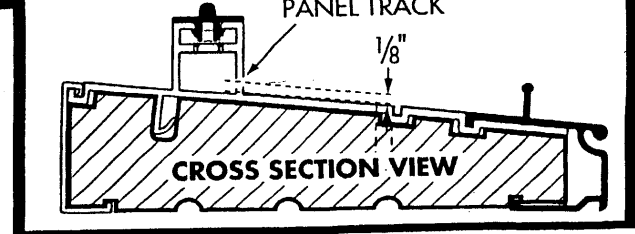
### 2 INSIDE



### 2 OUTSIDE

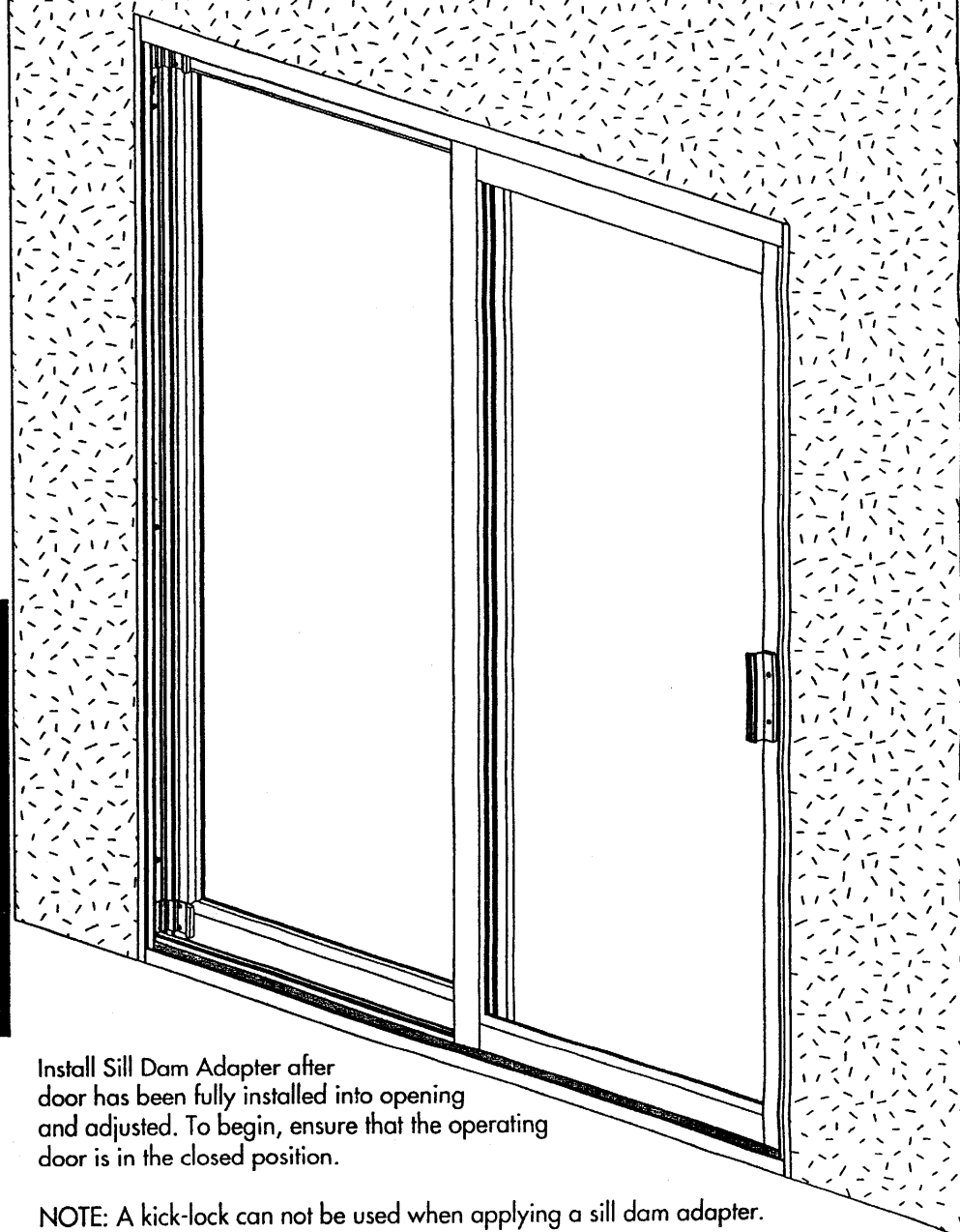
### 2b) DRILL FROM OUTSIDE

DRILL 3/16" HOLE THROUGH ONE WALL OF OPERATING PANEL TRACK

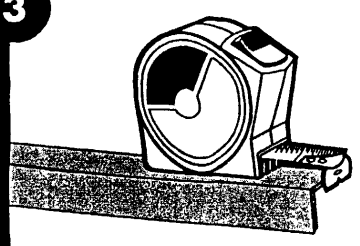


# SILL DAM ADAPTER

READ ALL INSTRUCTIONS  
BEFORE DRILLING ANY HOLES

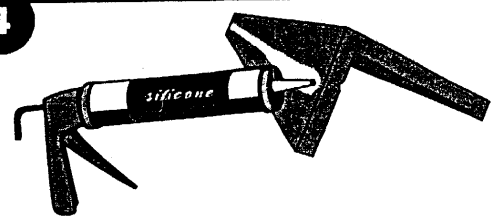


**3**



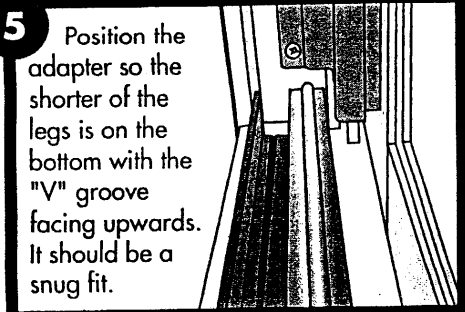
Check measure to ensure "L" shaped sill dam adapter fits between both jambs. Some trimming or cutting may be required to ensure a proper fit. Do not force sill dam adapter in.

**4**




Apply a bead of silicone caulking to the underside of the "L" shaped sill dam adapter.

**5**



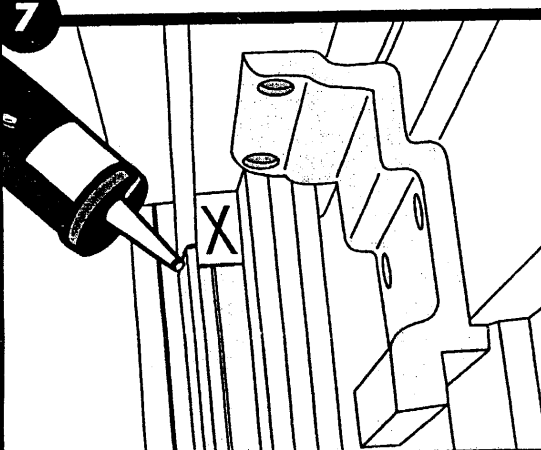
Position the adapter so the shorter of the legs is on the bottom with the "V" groove facing upwards. It should be a snug fit.

**6**



Install screws provided into pre-drilled holes using the "V" groove as a guide. Wipe away any excess silicone.

**7**



After the sill dam adapter is installed, apply a bead of silicone along the "L" ends of the adapter where it butts up against each side of vinyl jamb to prevent water leakage. Also, fill the crevice indicated by the "X" above with caulking to prevent standing water.

Install Sill Dam Adapter after door has been fully installed into opening and adjusted. To begin, ensure that the operating door is in the closed position.

NOTE: A kick-lock can not be used when applying a sill dam adapter.